



Emergency Preparedness and Evacuation Plan

**1131 Back Bay Drive
Newport Beach, California 92660**

During an emergency or disaster, local, state, or federal emergency agencies may order the evacuation of the local area, including Newport Dunes Resort. In the event an evacuation is ordered, Newport Dunes Management will take every step necessary, including door to door notification, to coordinate the evacuation of the RV Park. In the event of an evacuation order, TV news, radio, and internet may be your best source for information.

While Newport Dunes Resort will coordinate a section by section evacuation of the park, the residents are responsible for preparing and evacuating their persons and property. In the event of a disaster, Newport Dunes Resort will not be able to provide materials, services or transportation

Emergencies call 911

Newport Beach Police Department (non emergency) (949) 644-3681

Newport Beach Fire Department (non emergency) (949) 644-3104

California Poison Control System (800) 876-4766

Red Cross – Orange County Chapter (714) 481-5300

Federal Emergency Management Agency (800) 621-FEMA

Newport Dunes Security (949) 999-3151

Newport Dunes RV Park Main Number (949) 729-3868

A copy of the plan can be obtained at our web site:

Website Address www.newportdunes.com (information tab)

Index

Introduction	Page 3
Checklist of Emergency Procedures	Page 3
If Disaster Strikes	Page 4
Evacuation Routes, Sites, and Procedures	Page 5
RV Park Evacuation Map	Page 6
City of Newport Beach Evacuation Routes Map	Page 7
Personal Vehicles	Page 8
Recreational Vehicles	Page 8
Keep a Disaster Supplies Kit	Page 8
Sample Family Disaster Supply Kit	Page 8
Checklist of Emergency Procedures	Page 8
If Disaster Strikes	Page 9
Remember To	Page 9
Earthquake Preparedness	Page 9
Earthquake Indoors	Page 10
Earthquake Outdoors	Page 10
Fire Safety	Page 10
Floods	Page 10
During a Flood	Page 11
After a Flood	Page 11
Tsunami	Page 12
After a Tsunami	Page 12
Tornado	Page 13
First Aid	Page 13
Sample First Aid Kit	Page 14
Provisioning for those who may need Assistance	Page 14
Local Contact Information	Page 14

Introduction

The safety of our residents and guests of the Newport Dunes Resort is of the utmost importance to us. Newport Dunes Resort's notice about this Emergency Preparedness Plan is posted in the Activities Information Board by RV park pool, in our "Rules and Regulations" and in our Agreement of Rules for RV Park Monthly Guests.

This guide is provided to help you prepare and understand what to do in the case of an emergency. It is your responsibility to do what is necessary to be prepared in the event of a natural disaster or pending emergency crisis. An evacuation map is provided in this document. We suggest that you make yourself, family members, and guests familiar of what to do in the event of an emergency and who to contact should you need assistance. You should not rely on Newport Dunes Resort management, as we may be occupied with other priorities and responsibilities.

It is your responsibility to be prepared, and to evacuate your family in the event of an emergency. Take time to prepare yourselves for such an event.

Newport Dunes Resort is not responsible for the evacuation of residents and property, or providing materials, transportation, or services during an emergency. Please plan to be prepared to evacuate and care for your family without assistance.

The most common type of disasters in our area is earthquake and flooding. Flooding has not traditionally been a problem at Newport Dunes Resort, but our proximity to the ocean could subject us to heavy tidal or tsunami surge.

The Newport Dunes Resort largely accommodates mobile recreational RVs and fixed cottages. In the event of an emergency evacuation order, where time is of the essence, it is recommended that tenants gather only what they need and proceed to the designated exit. In the event of an evacuation where time is not of the essence, there should be ample time to remove trailers and recreational vehicles without a risk to safety.

Checklist of Emergency Procedures

Meet with your family and discuss why you need to prepare for disasters. Explain the dangers of fire, flood and earthquakes to children, the elderly, and individuals that may need special assistance. Plan to share responsibilities and work together as a team. The following may be used in creating your own Emergency Response Plan:

Discuss the emergency exits in your trailer or RV. Ensure that everyone in your family can operate the emergency exit handles without assistance.

Make sure the safety features in your trailer or RV, such as smoke detectors and fire extinguishers, are in proper working condition.

Discuss what to do in an evacuation.

Post emergency telephone numbers in a conspicuous place inside the trailer or RV.

Instruct family members to turn on a battery powered radio for emergency information.

Teach children how and when to call 9-1-1 and a long distance contact person.

Prepare a disaster supply kit.

If Disaster Strikes

Remain calm and patient. Inventory you family members to ensure everyone is accounted for. Put your plan into action.

Check for injuries; give first aid and get help for seriously injured.

Listen to your battery powered radio for news and instructions.

Evacuate if advised to do so. Wear appropriate clothing and sturdy shoes.

Check for damage to your trailer or RV. Make sure it is safe to remain within the vehicle.

Check for fires, fire hazards and other hazards.

If you are remaining in your trailer or RV, sniff for propane leaks. If you smell or suspect a leak, turn off the main valve on the propane tanks, open windows, and get everyone outside quickly.

Shut off any other damaged utilities.

Clean up spilled medicines, bleaches, gasoline and any other flammable liquid immediately.

Also, you can tune your radio to one of the following local radio stations for emergency or evacuation information:

- 640 - KFI
- 95.5 – KLOS
- 96.7 – KWIZ
- 980 – KFVB
- 97.9 – KLAX
- 101.5 KOCI
- 1070- KNX

Remember to:

Remember to confine or secure your pets.

Call your family contact - **do not use the telephone again unless it is an emergency.**

Check on your neighbors, especially elderly or disabled persons.

Make sure you have an adequate water supply in case service is shut off.

Stay away from downed power lines.

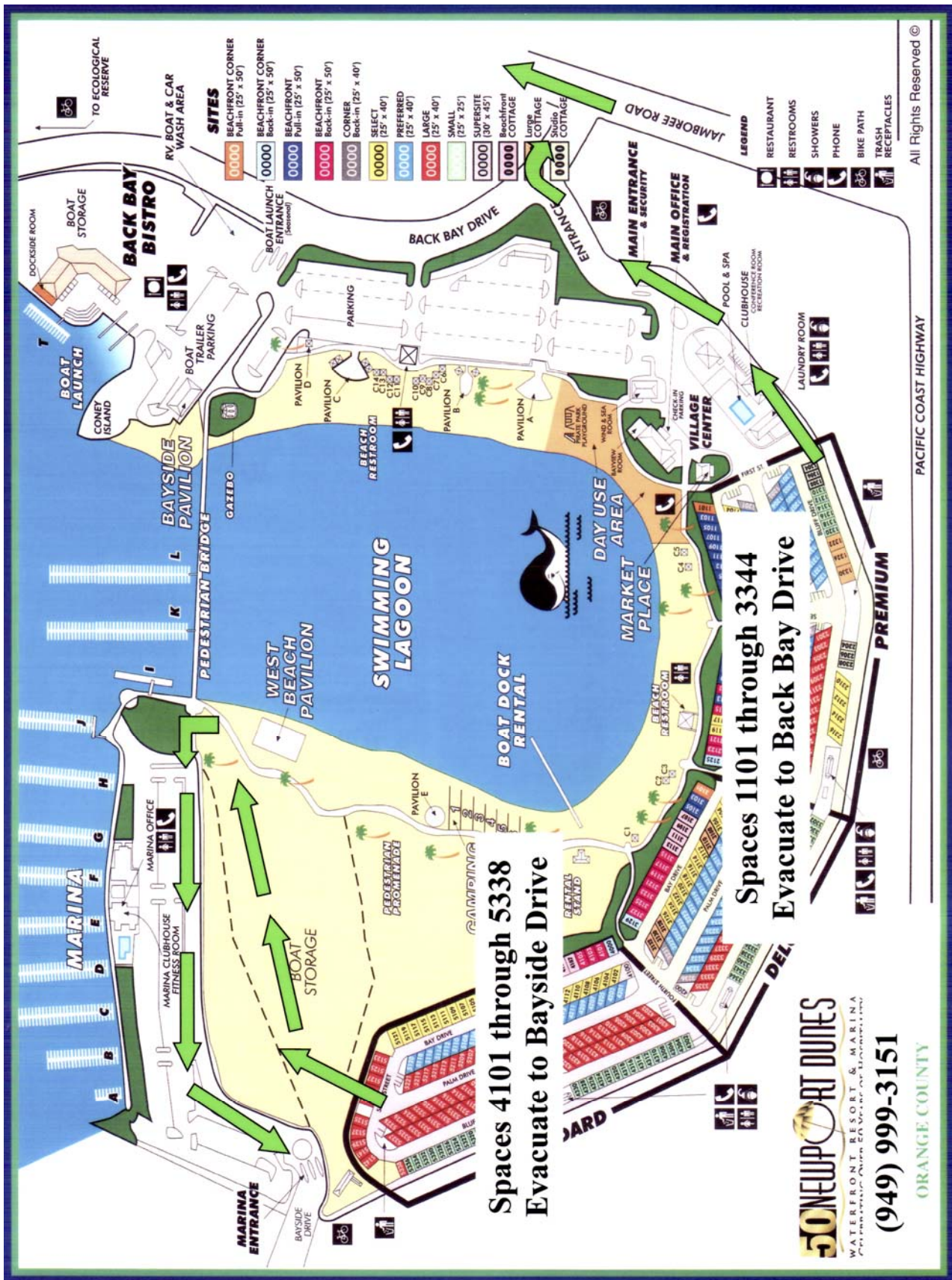
Evacuation Routes, Sites & Procedures

Two primary exit points will be utilized in any evacuation of Newport Dunes Resort. Sites 1101 through sites 3344 will evacuate through the main gate located at 1131 Back Bay Drive. After exiting the Newport Dunes Resort Driveway, turn right on Back Bay Drive and left on Jamboree.

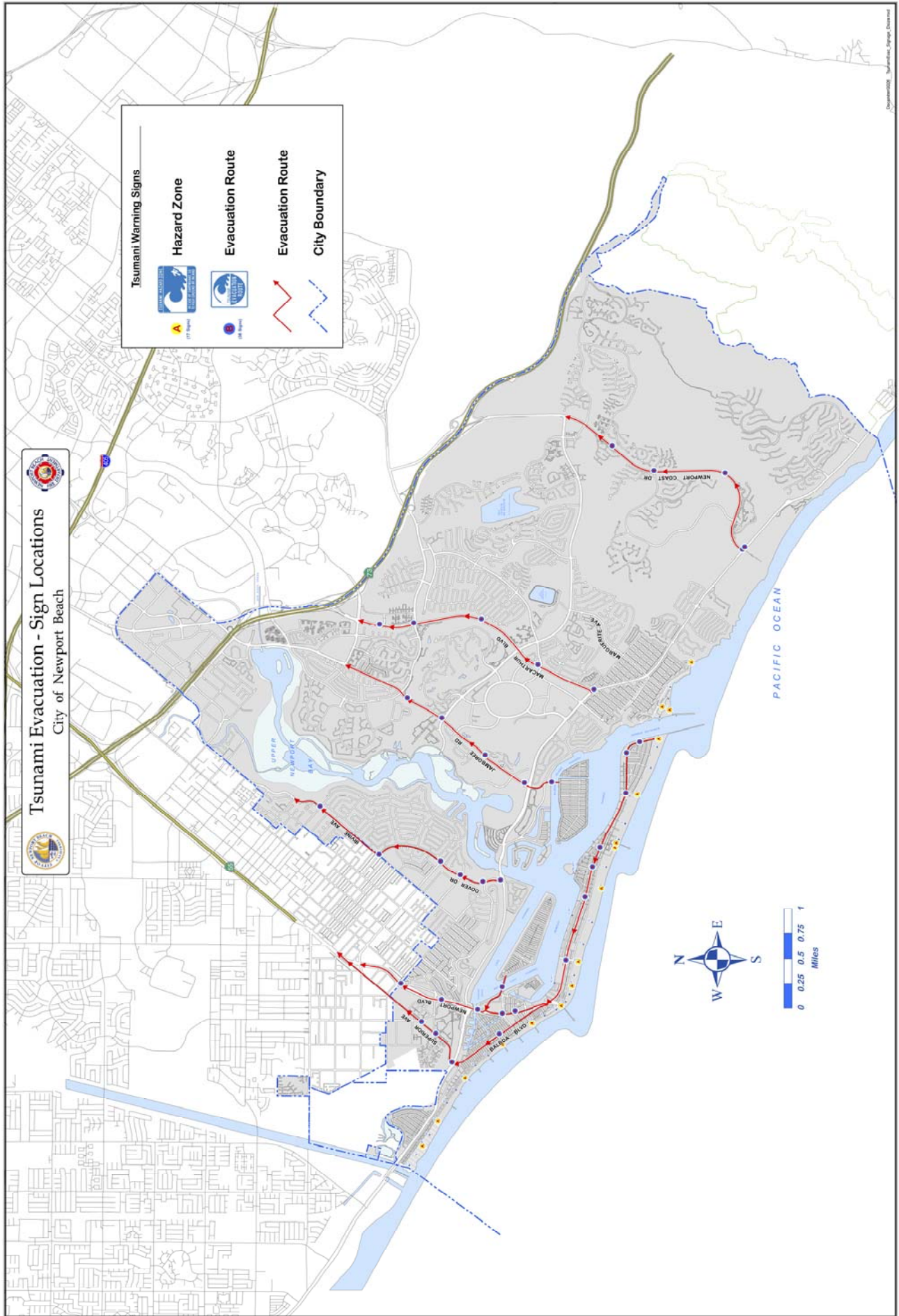
This is a primary tsunami evacuation route for the city of Newport Beach. Stay tuned to local radio for any evacuation centers in our region.

Sites 4000 through 5338 will exit through the marina onto Bayside Drive. Turn right onto PCH Highway and stay in the right lane. Veer right onto Dover Drive and follow the Tsunami evacuation signs. Make a right on Irvine Avenue and continue to follow the evacuation route inland. Stay tuned to local radio for any evacuation centers in our region.

Our Disaster Preparedness Emergency Plan Committee (DPEPC), consisting of the RV Park manager, resident managers, engineering personnel and security officers will assist in the notification of any pending emergency. In addition, key personnel will coordinate a section by section evacuation of the Newport Dunes Resort in the event of an evacuation order, or as a result of a local disaster.



Two primary evacuation routes for the city of Newport Beach are available to the residents of Newport Dunes. Follow the routes to a safe area and stay tuned to local radio for emergency evacuation information and designated evacuation areas.



Personal Vehicles

Personal vehicles are the preferred method of evacuation, but should take the assigned exit, depending on location in the RV Park. The designated evacuation through the main gate on Back Bay Drive is to make a right turn on Back Bay Drive, and an immediate left on Jamboree Road. Continue on Jamboree road, as it is a designated evacuation route for the city of Newport Beach.

When evacuating through the marina, it will be necessary to exit the RV Park and enter the boat storage lot. Continue through the rear of the storage lot, making a left hand turn into the marina. Exit the marina onto Bayside Drive. The first signal is Pacific Coast Highway. Turn right on Pacific Coast Highway and stay in the right lane. The right lane will veer onto Dover Drive. In approximately 1 mile, turn right on Irvine Avenue. Continue on Irvine Avenue, as it is a designated evacuation route for the City of Newport Beach.

Remember to tune your vehicle radio to local news and traffic for information regarding evacuation instructions.

Recreational Vehicles

While it is recommended that RV's and travel trailers should not be used for emergency evacuation, there may be time to move them in evacuations in which time is not of the essence. Other situations may exist in which RV's *are* the only means of transportation.

If evacuating in an RV, do not exit the space until you are prepared to leave. Make sure slide-outs, electrical, and sewer connections are secure. Exiting the space prior to being ready to evacuate may block the street and impede other residents from evacuation.

Do not attempt to evacuate with a travel trailer. The process of attaching the tow vehicle to the trailer is lengthy and will necessitate you to block the street for several minutes, blocking the evacuation route of others who are ready to leave. This delay may be dangerous to you and your family, and the others you are preventing from leaving.

Keep a Disaster Supplies Kit

Your kit will be specific to your family. For suggestions in putting together your family disaster kit, you can visit <http://www.sanjoseca.gov/emergencyservices/> or The American Red Cross at <http://www.redcrossbayarea.org>

You should inspect your kit at least twice a year. Rotate food and water every six months. Check children's clothing for proper fit. Adjust clothing for winter or summer needs. Check expiration dates on batteries, light sticks, warm packs, and food and water.

Keep a light source stored in the top of your kit for easy access in the dark. Your kit should be in a portable container located in an accessible place in your RV or travel trailer. A large plastic garbage can with a lid makes an excellent storage container. Make sure you have not overloaded your kit as you may have to carry it long distances to reach safety or shelter. You may want to have a backpack or duffle bag for each family member and divide up the rations in the event that family members are separated during evacuation or the disaster.

Sample Family Disaster Supply Kit

3-5 gallons of water (one gallon of water per person per day)
Method of water purification
Food: ready-to-eat canned meats, fruits, and vegetables; canned juices, milk, soup; high energy foods - peanut butter, jelly, crackers, granola bars, trail mix; specialty foods for infants, elderly persons or persons on special diets; comfort/stress foods -cookies, hard candy, sweetened cereals, lollipops, instant coffee, tea bags; vitamins
Matches in a waterproof container
Second method of starting a fire
Tent/shelter
Wool-blend blankets or sleeping bags (1 per person)
Emergency reflective blanket
Lightweight stove and fuel
Hand and body warmer packs
Rain poncho
Flashlights with extra batteries, light sticks, lantern with fuel and wicks
Tools (pliers, hammer, screw drivers, bolt cutters, pocket/utility knife)
Shovel and hatchet or axe
Sewing kit
50-foot nylon rope
First aid kit and supplies, including burn gel and dressings
Bottle of potassium iodide tablets
Radio, batteries, and extra batteries
Whistle with neck cord
Personal sanitation equipment
Personal comfort kit (include soap, toothbrush, toothpaste, comb, tissue, razor, deodorant), and any other needed items
Extra Clothing (include at least one complete change of clothing and footwear per person per day) extra socks, underwear, hat, gloves, and sturdy shoes
Mess kits, paper cups, plates and plastic utensils
Cash (at least \$20) or traveler's checks
Non-electric can opener
Fire extinguisher: small canister, ABC type
Important family papers (copies of birth certificates, marriage licenses, wills, insurance forms, phone numbers, credit card information)
Sun block/sun glasses, hat
Portable toilet
Insect repellent
Tape
Compass
Aluminum foil
Signal flare
Household chlorine bleach

Checklist of Emergency Procedures

Meet with your family and discuss why you need to prepare for disasters. Explain the dangers of earthquakes, flood, or severe weather to your family. Plan to share responsibilities and work together as a team. The following may be used to create your own Emergency Response Plan while on vacation.

Develop an Emergency Communications Plan in case of separation during an emergency.

Discuss the safety equipment of your RV or travel trailer. Make sure your family knows where the emergency exits are and how to operate them without assistance. Mark the location of the fire extinguisher(s) and discuss the proper way to use it.

Discuss what each individual family member is to do in case of an evacuation. Consider a rallying point if family members get separated and members are not able to communicate with each other via phone.

Teach children how to dial 911, and how to convey important information.

Post emergency phone numbers and numbers of family members in a conspicuous place. Keep a battery powered radio on hand with spare batteries. Make sure everyone knows where it is located.

Prepare a family disaster supply kit to keep in the RV or travel trailer. Make sure the supplies are up to date prior to each vacation.

If Disaster Strikes

Remain calm and put your plan into action.

Check for any injuries; give first aid and get help for anyone seriously injured.

Tune into news for instructions. Use a battery operated radio if necessary.

Evacuate if instructed to do so. Wear appropriate clothing and sturdy shoes.

Check the RV or travel trailer for fire or fire hazards. Turn off the propane if necessary.

Shut off any damaged utilities.

Clean up spilled medications, bleaches, gasoline and any other flammable materials immediately.

Remember to:

Confine or secure your pets.

Call your family contact.

Check on your neighbors, especially elderly or disabled persons.

Make sure you have an adequate water supply in case service is shut off.

Stay clear of downed or damaged power lines.

Earthquake Preparedness

Check for hazards in the RV or travel trailer.

Identify same places throughout the RV or travel trailer.

Ensure all family members know how to respond after an earthquake.

Have a family disaster supply kit.

Earthquake Indoors

Take cover under any piece of sturdy furniture or doorway or get up on a bed or couch that is against a wall.

Stay away from windows or ceiling objects such as lighting fixtures.

Do not light matches or candles.

Do not turn on any electrical equipment.

Use only battery operated flashlights and radios.

Earthquake Outdoors

Find an open area and remain there until the earthquake stops.

Stay away from power poles and electric lines, tall buildings, bridges, brick or block walls, underpasses and trees.

Listen to a self contained battery powered radio for emergency information.

Confine and secure pets so that they will not hamper emergency services.

Aftershocks may occur, so be prepared.

Fire Safety

Immediately access the problem (where, extent involved), to assist in exiting away from the fire source.

Make sure your entire family knows where the fire extinguisher(s) is, and how to use them.

Get everyone else to exit the RV or travel trailer immediately.

If safe to do so, retrieve any pets.

Call 911 and the Newport Dunes Resort front office (949-729-3863) in that order.

Give your name, state “Newport Dunes Resort” and give the address 1131 Back Bay Drive, Newport Beach. Give the 911 operator the RV space number.

State the nature of the fire, RV, travel trailer, and report any known injuries.

Warn neighbors if it is safe to do so.

Retreat to a safe area, never reenter a burning structure of any kind.

Should your clothing catch fire: first cover your face and mouth, then drop and roll. Never run. If a blanket or rug is handy, roll yourself (or another victim) in it until the fire is out.

Floods

Flood Watch means that there is a possibility of a flood.

Flood Warning means that flooding has begun or is imminent.

Newport Dunes Resort is at sea level, and is located on the shoreline of Newport Harbor. Newport Dunes is at greatest risk of flooding through tidal surge or Tsunami.

Review the enclosed evacuation route in the event of a flood watch/warning or Tsunami watch/warning.

The National Weather Service continuously broadcasts updated weather conditions, warnings and forecasts on National Oceanic Atmospheric Administration (NOAA) weather radios. A NOAA radio may be purchased at radio or electronic stores. NOAA weather forecasts and warnings are also available on the NOAA website; www.nws.noaa.gov/. Local broadcast stations transmit Emergency Alert System messages which may be heard on standard radios.

When rising water threatens, move everything possible to higher ground. Please use the evacuation map for the city of Newport Beach enclosed in this document.

During a Flood

Take all flood warnings seriously. Do not wait. Proceed to higher ground (using the enclosed evacuation routes for the City of Newport Beach) immediately, as flood waters often rise faster than expected.

For emergency evacuation to high ground, Back Bay View Park offers the nearest high-ground evacuation area. The park is located on the corner of Jamboree Dr. and Pacific Coast Highway. A foot path entrance to the park is located just to the right of the main entrance to the Newport Dunes Resort on Back Bay Dr.

If time permits, take all important documents, medicines, and eye glasses.

If one escape route is not passable, do not waste any time. Try an alternate route or back track to higher ground.

Use the travel routes specified by local officials. Never drive through flooded areas. Do not bypass or go around barricades.

Wear life preservers if possible. Wear appropriate clothing and sturdy shoes.

Avoid contact with flood water if possible. Flood water may be contaminated and pose health problems. If cuts or wounds come in contact with flood waters, clean the wound as thoroughly as possible.

Take your family's disaster supply kit with you.

Lock your RV or travel trailer prior to leaving.

When you reach a safe location, notify your family.

After a Flood

Do not return to Newport Dunes Resort unless authorities state that it is safe to do so.

Do not drink tap water unless it is declared safe. Boil water if unsure.

If fresh food has come into contact with flood water, throw it out.

Do not plug into or turn on the main power located at the pedestal unless it has been determined it is safe to do so.

A flood can cause emotional and physical stress. Tend to yourself and family prior to cleanup and repair.

Tsunami

Tsunami Watch means that there is a possibility of a Tsunami.

Tsunami Warning means that a Tsunami has begun or is imminent.

Tsunamis are an infrequent yet serious hazard in the Pacific Ocean. A tsunami is a series of traveling ocean waves of great length and long period, generated by disturbances associated with earthquakes in oceanic and coastal regions. As the tsunami crosses the deep oceans, its length from crest to crest may be a hundred miles or more, its height from trough to crest only a few feet high.

A tsunami is normally not one wave, but a series of waves, which may occur over a period of ten hours. The first wave may not be the largest.

Newport Beach Primary Danger Areas in Priority Order

1. All beach and pier areas.
2. Newport Harbor area.
3. All areas just inland of Coast Highway to the bluffs
4. All Back Bay waterfront residences
5. West Newport from the Santa Ana River jetty to Superior

Take all tsunami warnings seriously. Do not wait. Proceed to higher ground (using the enclosed evacuation routes for the City of Newport Beach) immediately, as flood waters often rise faster than expected.

For emergency evacuation to high ground, Back Bay View Park offers the nearest high-ground evacuation area. The park is located on the corner of Jamboree Dr. and Pacific Coast Highway. A foot path entrance to the park is located just to the right of the main entrance to the Newport Dunes Resort on Back Bay Dr.

If time permits, take all important documents, medicines, and eye glasses.

If one escape route is not passable, do not waste any time. Try an alternate route or back track to higher ground.

Use the travel routes specified by local officials. Never drive through flooded areas. Do not bypass or go around barricades.

Wear life preservers if possible. Wear appropriate clothing and sturdy shoes.

Avoid contact with flood water if possible. Flood water may be contaminated and pose health problems. If cuts or wounds come in contact with flood waters, clean the wound as thoroughly as possible.

Take your family's disaster supply kit with you.

Lock your RV or travel trailer prior to leaving.

When you reach a safe location, notify your family.

After a Tsunami

Do not return to Newport Dunes Resort unless authorities state that it is safe to do so.

Do not drink tap water unless it is declared safe. Boil water if unsure.

If fresh food has come into contact with flood/Tsunami water, throw it out.

Do not plug into or turn on the main power located at the pedestal unless it has been determined it is safe to do so.

A flood/Tsunami can cause emotional and physical stress. Tend to yourself and family prior to cleanup and repair.

Tornado

Although tornados are not a common occurrence in California, they have been reported.

Pay close attention to weather reports. Know the difference between a tornado watch (when conditions are ripe for a severe weather event) and a warning (when a severe weather event is occurring or is imminent).

Plan where to go during severe weather - for instance, the Newport Dunes Resort club house, or a relative's basement.

When a tornado warning has been issued, **leave your RV or travel trailer immediately**. Go to your pre-determined safe place or lie down in a low area with your hands covering the back of your head and neck.

Be sure to keep a transistor radio - with working and extra batteries handy.

Keep your Family's Disaster Supply Kit with you.

First Aid

Information on first aid can be found in your local phone book or by contacting the American Red Cross.

Utilize known persons who are medically trained (such as doctors, nurses, or people medically trained in CPR and first aid) to assist in administering first aid to those injured.

If the injured individual(s) are in imminent danger they should carefully be moved to a safe location to administer first aid.

In the case where injuries are severe and movement could cause further injuries, **do not move** the injured. Make the injured person(s) as comfortable as possible and wait for emergency personnel.

Before emergencies, prepare a first aid kit. Have the kit in an easy to locate place. Make sure all family members know the location of the kit.

Sample First Aid Kit

Sterile adhesive bandages in assorted sizes
2 and 4-inch sterile gauze pads (4-6 each)
Hypoallergenic adhesive tape
Triangle bandages (3)
2 and 3-inch sterile roller bandages (3 rolls each)
Scissors
Tweezers
Needle
Moistened towelettes
Antiseptic
Thermometer
Tongue blades (2)
Tube of petroleum jelly or other lubricant
Assorted sizes of safety pins
Cleansing agent/soap
Latex gloves (2 pairs)
Sunscreen
Aspirin
Syrup of Ipecac
Activated charcoal (use only if advised by the Poison Control Center)

Government and Relief Agencies estimate that after a major disaster, it could take up to three days for relief workers to reach some areas. In such cases, a 72 hour disaster supply kit could mean the difference between life and death. In the event of an evacuation, you will need to have items in an easy-to-carry container like a backpack or duffle bag.

Provisioning for those who may need Assistance in Evacuating

Make arrangements for a family member or neighbor to assist you if you have special needs in an emergency or evacuation. You may call 911 but depending on the disaster, emergency services may not be quick in arriving.

Local Contact Information

Emergencies call 911

Newport Beach Police Department (non emergency) (949) 644-3681

Newport Beach Fire Department (non emergency) (949) 644-3104

California Poison Control System (800) 876-4766

Red Cross – Orange County Chapter (714) 481-5300

Federal Emergency Management Agency (800) 621-FEMA

Newport Dunes Security (949) 999-3151

Newport Dunes RV Park Main Number (949) 729-3868

Website Address www.newportdunes.com